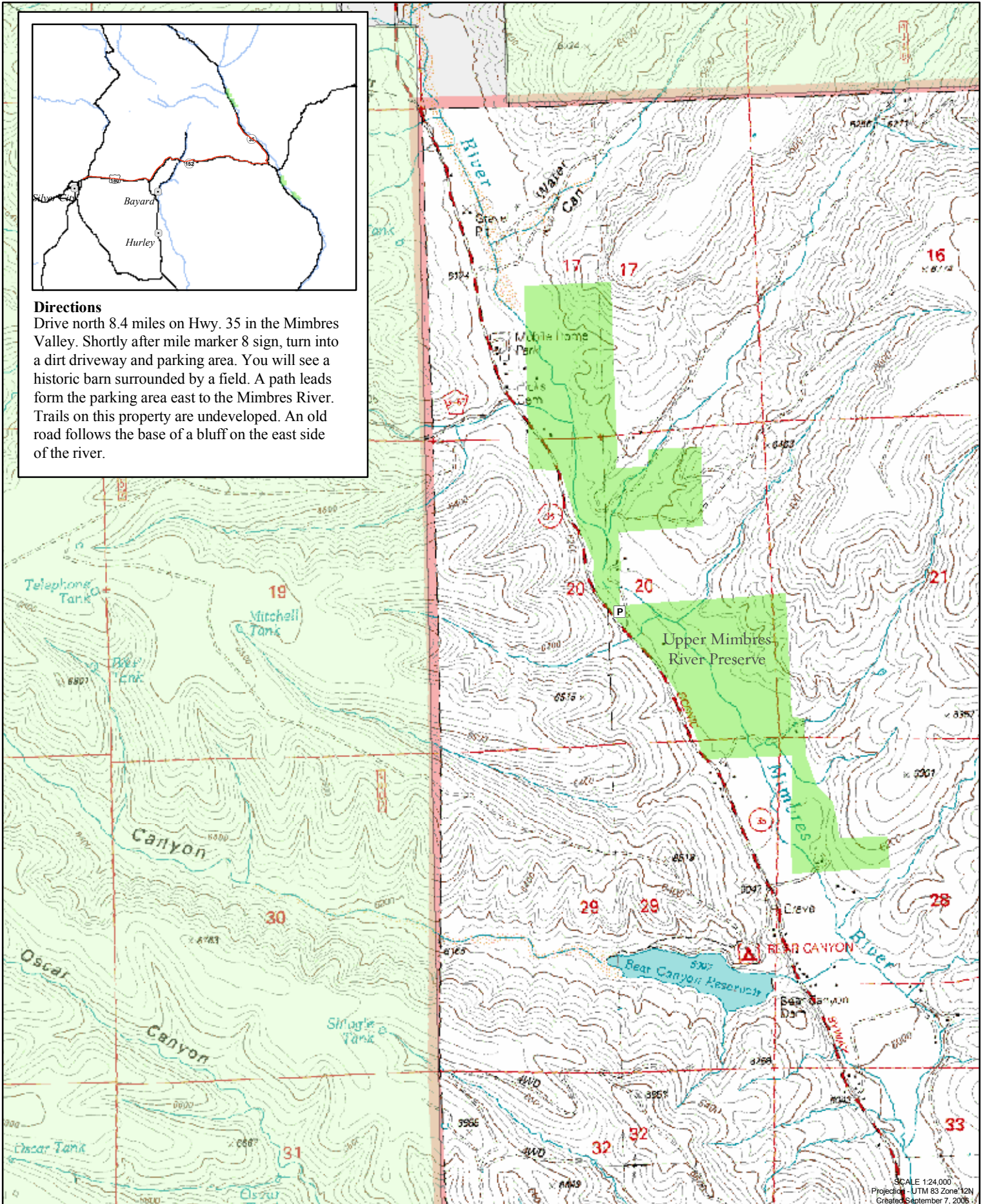


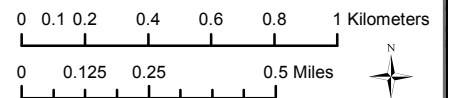
Directions

Drive north 8.4 miles on Hwy. 35 in the Mimbres Valley. Shortly after mile marker 8 sign, turn into a dirt driveway and parking area. You will see a historic barn surrounded by a field. A path leads from the parking area east to the Mimbres River. Trails on this property are undeveloped. An old road follows the base of a bluff on the east side of the river.



The Nature Conservancy
Mimbres River Preserve

- TNC Preserve
- National Forest
- State
- Other Private



SCALE 1:24,000
Projection - UTM 83 Zone 12N
Created September 7, 2006